



South Sherwood West

Public-Private Partnership Opportunities

METROPOLITAN
LAND GROUP MLG



2020-2021

The Vision

A **safer**, welcoming Pacific Highway corridor lined with trees, sidewalks, attractive commercial nodes, and an **iconic** Gateway Bridge.

Imagine a place where Sherwood High School, the YMCA, new parks, enhanced open spaces, **accessible** shopping districts, and new and existing neighborhoods seamlessly fold together—a **new neighborhood** connected via trails, public spaces, and a pedestrian/cyclist bridge nestled within the scenic, rolling hills of Sherwood.

This is South Sherwood West.

The Vision

Close-In Neighborhoods

New, family-friendly neighborhoods with public parks, greenspaces, and trails for easy pedestrian access to Sherwood High School and the community

Gateway Passage

An iconic pedestrian and bike bridge creating safe passage across Pacific Highway and connecting Sherwood High School to existing neighborhoods

Pedestrian Friendly

A safer, calmer, more beautiful Pacific Highway transportation corridor through Sherwood

Education Partnership

Dedicated “Bowmen House” hands-on learning lots adjacent to Sherwood High School and funding to support future school capital projects

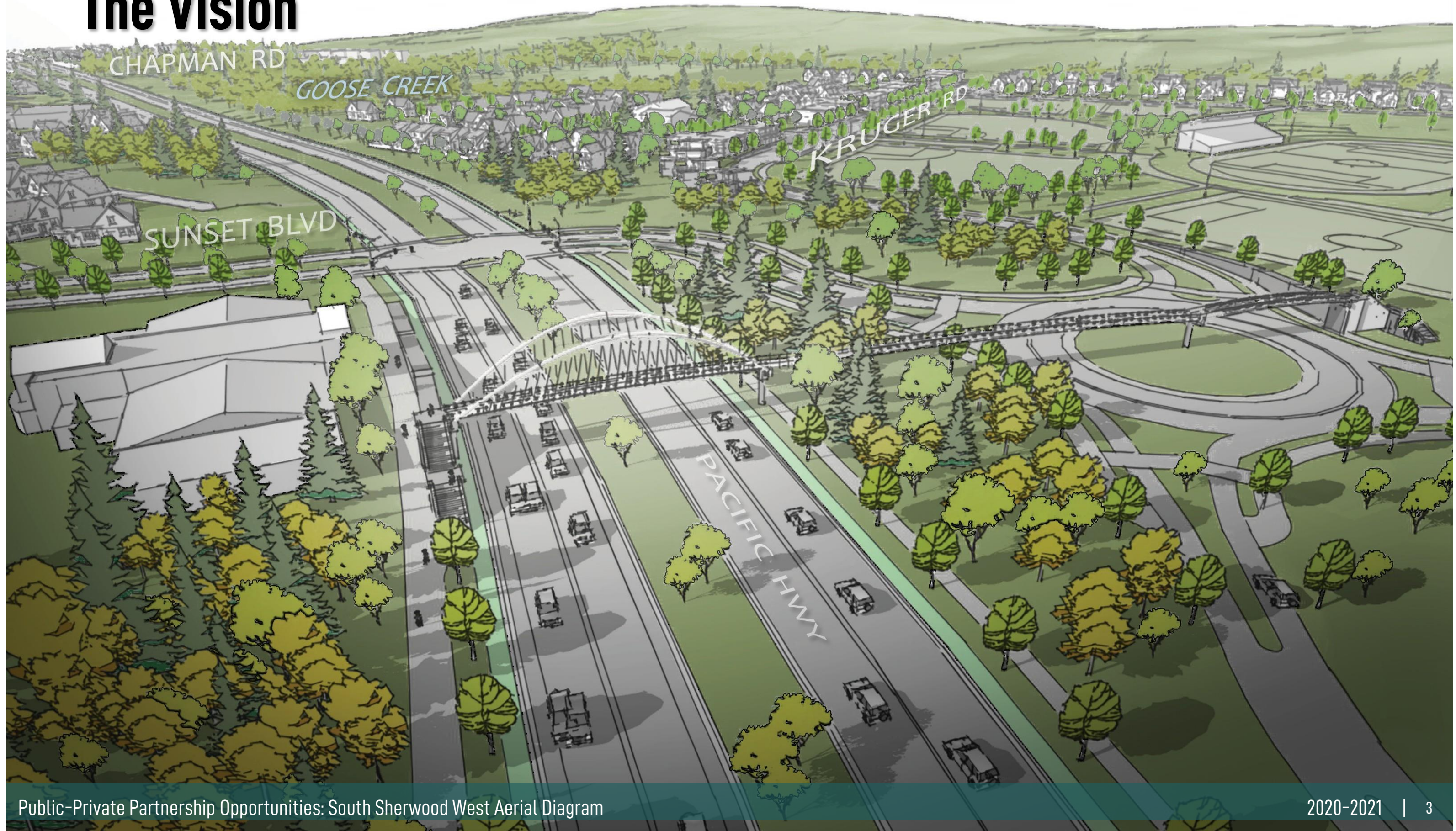
Jobs & Amenities

Attractive new business and commercial destinations to serve local residents and visitors

Community Building

Integration of YMCA as a walkable community and recreational hub serving new neighborhoods and families

The Vision



Partnership Benefits



Pacific Highway Corridor Safety Improvements

- Iconic pedestrian and bike crossing
- Median grading and landscaping
- Sidewalks and bike lanes
- Pedestrian-scale lighting
- Public art

Partnership Benefits

- Expedited Timing for Public Improvements
- Fully Realize Ongoing and Past Planning and Public Investments

Partnership Benefits

- 
- Expedited Timing for Public Improvements
 - Fully Realize Ongoing and Past Planning and Public Investments



Partnership Benefits

- Expedited Timing for Public Improvements
- Fully Realize Ongoing and Past Planning and Public Investments

Partnership Benefits

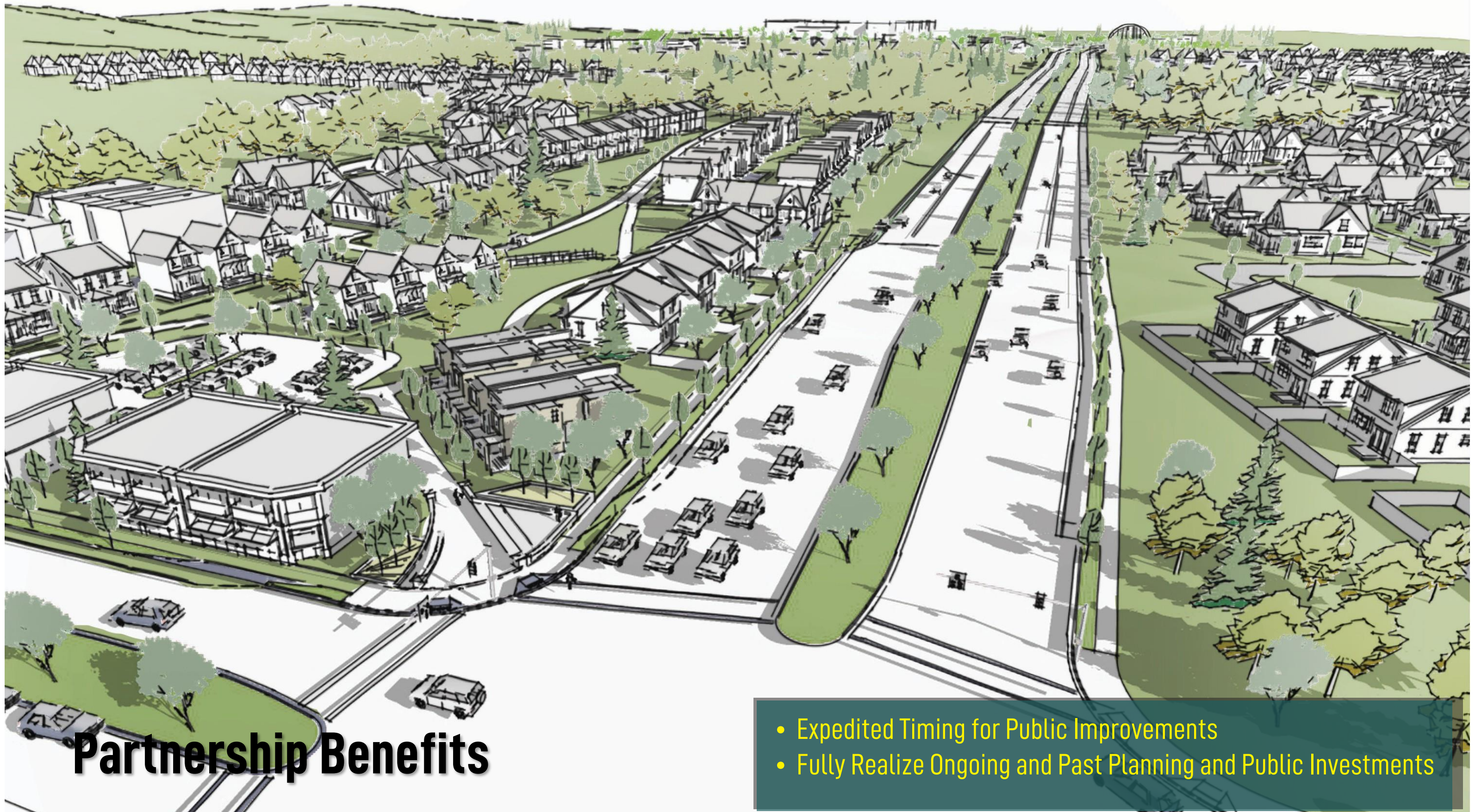
- Expedited Timing for Public Improvements
- Fully Realize Ongoing and Past Planning and Public Investments



Partnership Benefits

- Expedited Timing for Public Improvements
- Fully Realize Ongoing and Past Planning and Public Investments





Partnership Benefits

- Expedited Timing for Public Improvements
- Fully Realize Ongoing and Past Planning and Public Investments

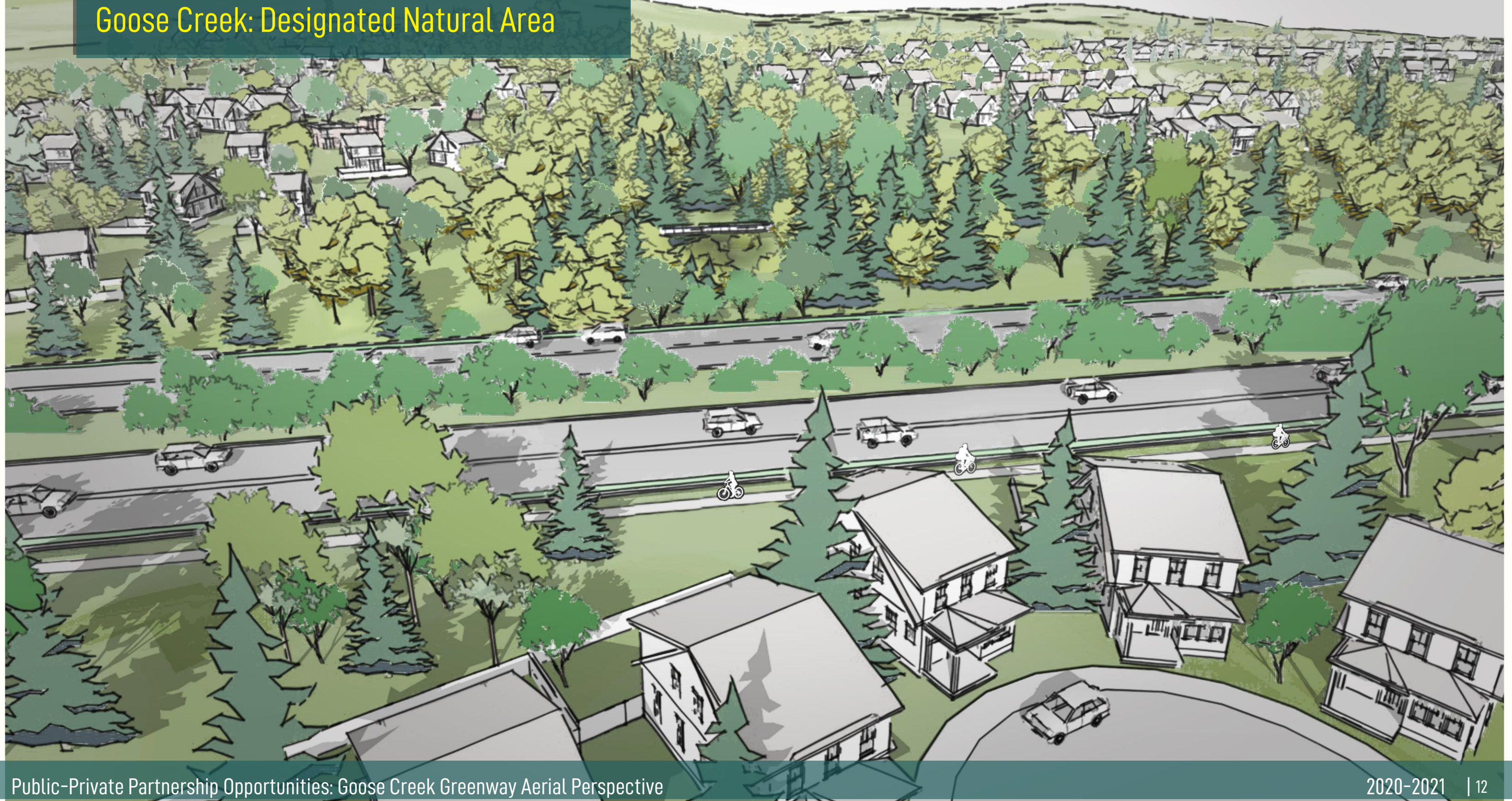
Partnership Benefits

- Expedited Timing for Public Improvements
- Fully Realize Ongoing and Past Planning and Public Investments



Greenway + Open Space

Goose Creek: Designated Natural Area





Greenway + Open Space

Accessible Parks for Public & Watershed Health

Partnership Benefits

Expedited Timing for Public Improvements

- Pedestrian/Bike Bridge
- Pacific Highway Enhancements
- Road Improvements: Kruger, Chapman, and Elwert
- “Bowmen House” Hands-On Learning Lots
- Revenue Stream for Future High School Needs

Fully Realize Ongoing and Past Planning and Infrastructure Investments

- Completed Multi-Year South Sherwood West Concept Planning
- Integration of Sherwood High School into Community Surroundings
- Brookman Sewer Extension
- Elwert and Kruger Road Improvements/Roundabout

